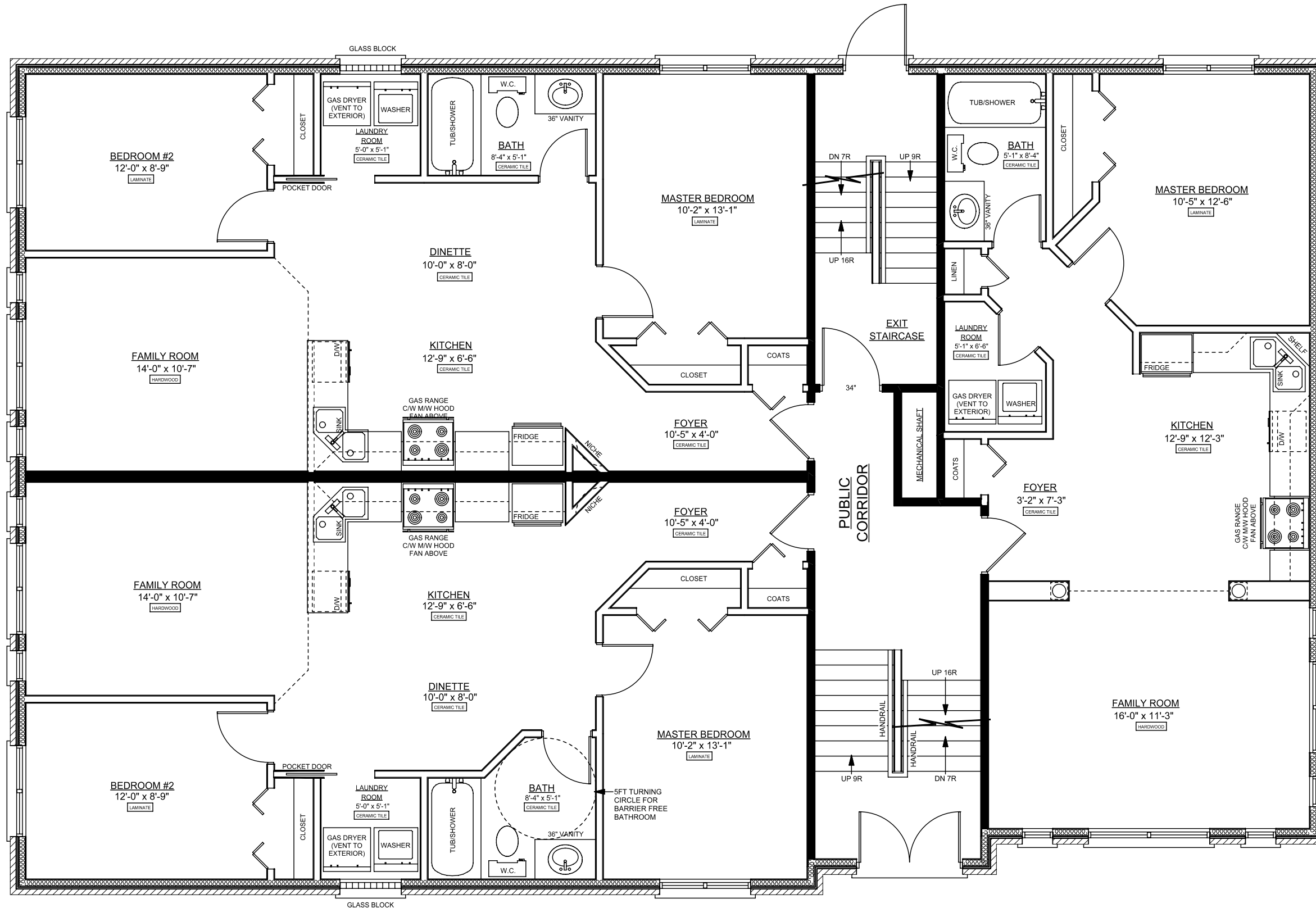


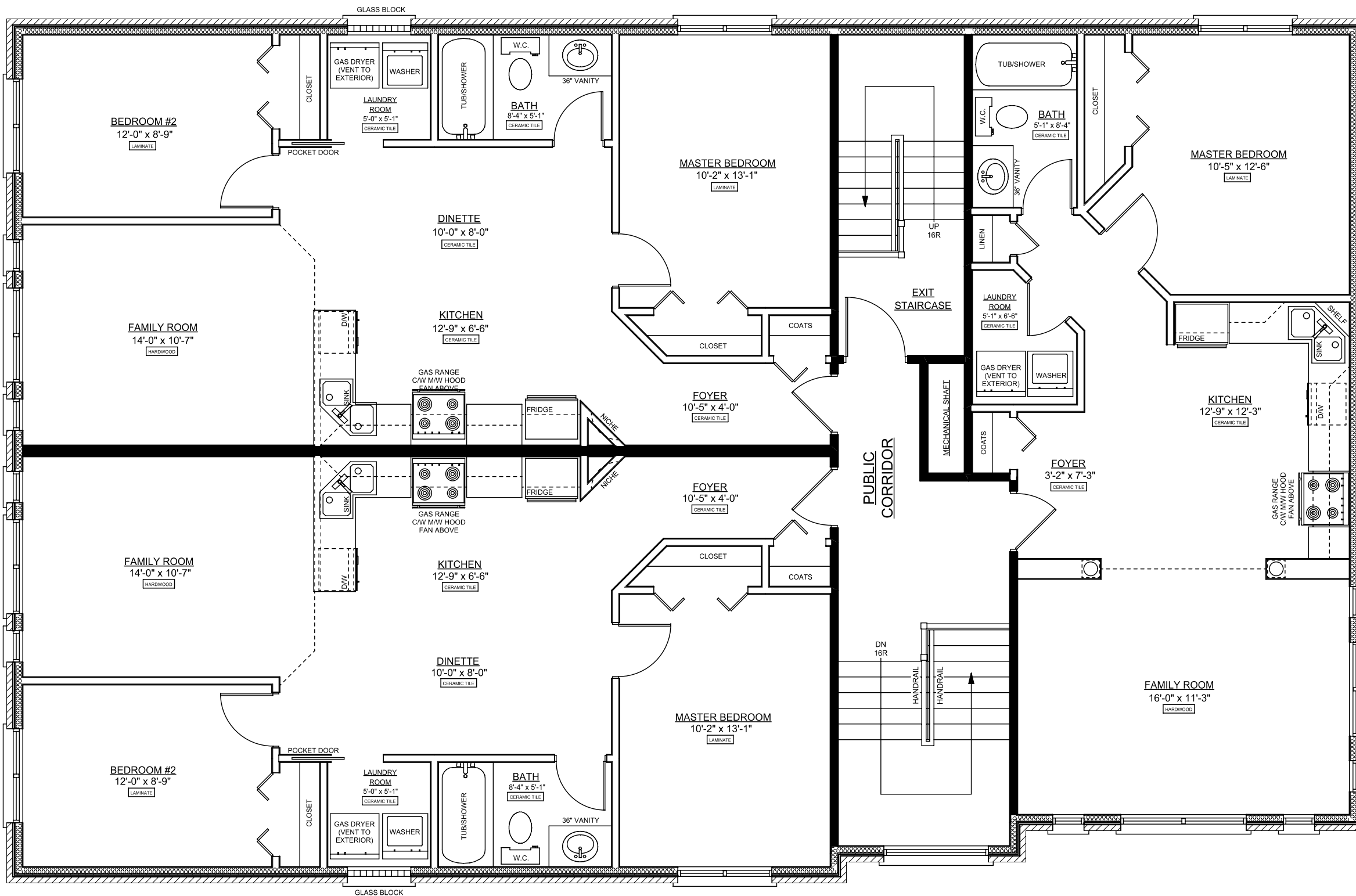
**LOWER FLOOR LAYOUT 2340 SQ.FT.**

TWO BEDROOM APPARTMENT: 779 SQ.FT. x 2 = 1558 SQ.FT.  
 MECHANICAL = 406 SQ.FT.  
 STORAGE = 179 SQ.FT.  
 PUBLIC CORRIDOR & STAIRWAYS = 197 SQ.FT.  
 TOTAL: 2340 SQ.FT.



**MAIN FLOOR LAYOUT 2638 SQ.FT.**

TWO BEDROOM APARTMENT: 818 SQ.FT. x 2 = 1636 SQ.FT.  
 ONE BEDROOM APARTMENT: 702 SQ.FT.  
 PUBLIC CORRIDOR & STAIRWAYS = 300 SQ.FT.  
 TOTAL: 2638 SQ.FT.



**UPPER FLOOR LAYOUT 2638 SQ.FT.**

TWO BEDROOM APARTMENT: 818 SQ.FT. x 2 = 1636 SQ.FT.  
 ONE BEDROOM APARTMENT: 702 SQ.FT.  
 PUBLIC CORRIDOR & STAIRWAYS = 300 SQ.FT.  
 TOTAL: 2638 SQ.FT.